

North LRT to NAIT Update



105 Ave Today



105 Ave Tomorrow

In July 2011, significant changes are about to begin on 105 Ave.

The tunnel portal excavation on 105 Ave will look similar to this photo of the 111 Street LRT tunnel work on the South LRT.

105 Avenue Closes for Excavation

105 Avenue is getting a major facelift.

Starting in July, excavation of 105 Ave between 102 Street and 103 Street will begin. Contractors are digging up the roadway to build a tunnel portal that will eventually connect the underground portion of the North LRT to the surface where it will run from 105 Ave to NAIT.

As a result, 105 Ave is closing completely for the remainder of the construction season, with no traffic movements allowed in any direction between 102 Street and 105 Street.

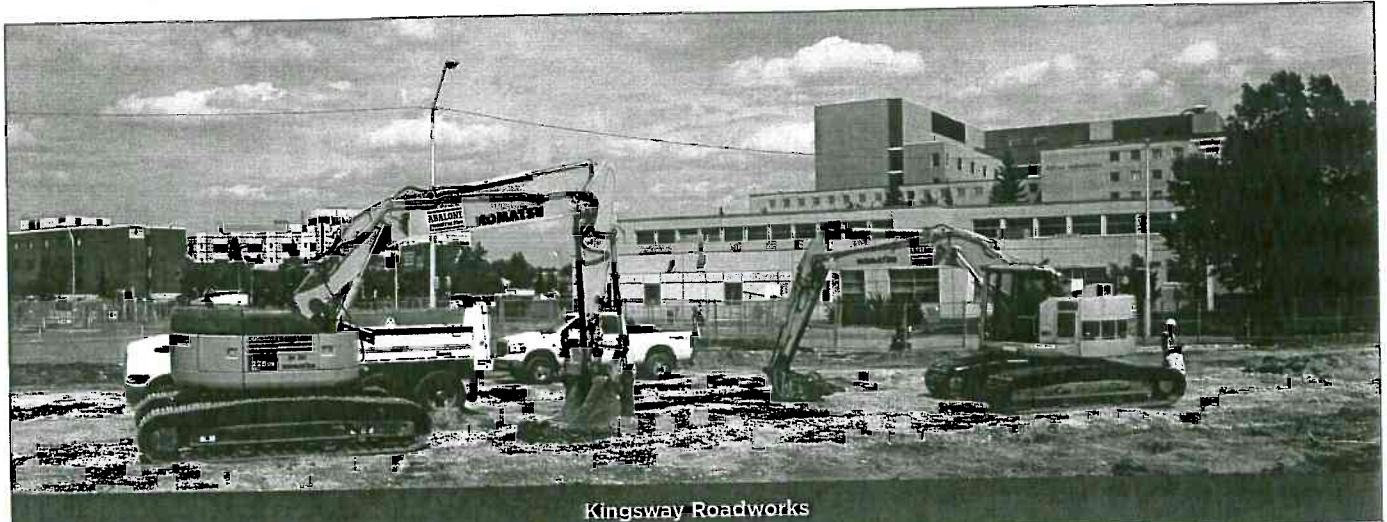
From 102 Street to 103 Street this closure will be temporary, until November 2011, when the tunnel portal is scheduled to be complete. Then contractors can start tunneling from 105 Ave below 101 Street to connect with the tunnel

cavity that's already built below the new EPCOR Tower. Total restoration between 101 Street and 103 Street will be completed in 2013.

From 103 Street to 105 Street, 105 Ave will be permanently closed to automobile traffic. This section of roadway is the site of the future MacEwan LRT Station. Contractors are installing the foundation and underground utilities for MacEwan Station this summer. That work should be complete by November 2011. See www.edmonton.ca/nlirt for detailed artistic renderings of the future MacEwan station.

The City's strategy is for the North LRT to serve as a revitalizing catalyst for this important section of downtown Edmonton's north-edge.

Project Overview - Where We Are At



Kingsway Roadworks

The relocation of Kingsway between 102 Street and 106 Street, next to the Royal Alex Hospital, is well underway and will be complete by October.

Roadworks

Kingsway

Kingsway remains closed between 102 Street and 106 Street. Traffic signals have been adjusted at several key intersections to maximize flow of diverted traffic. Kingsway will be completely relocated and re-opened to vehicle and pedestrian traffic by October.

106 Street north of 111 Ave

During summer 2011, contractors will begin removing the median and relocating the traffic lanes to the west, to create space for the North LRT on the east side of 106 Street.

105 Street Alleyways

In August 2011, minor roadworks will begin in the alleyways on either side of 105 Street between 107 Ave and 108 Ave, to maintain access once this section of 105 Street closes permanently to automobile traffic in 2012.

Utility Relocations

All utility relocations are scheduled to be complete by fall 2011:

- » **Power** - Some (e.g. 104 Street) ongoing through August.
- » **Water** - Beginning at NAIT. Ongoing at 106 St/Princess Elizabeth Ave.
- » **Drainage** - Ongoing outside City Hall until mid-July; ongoing at 103 St/108 Ave until October.

- » **Gas** - Ongoing at 106 St/Princess Elizabeth Ave until mid-July.
- » **Other** - Fibre optic and telephone ongoing through summer 2011.

Removals

Building removals for the North LRT are complete. Altogether, 23 low-rise structures have been removed from various properties the City acquired in order to build the North LRT:

- » Seven former commercial buildings on 105 Ave.
- » Two three-storey apartment buildings on 105 Street.
- » Former Legion building on Kingsway.
- » Former MacDonald's restaurant at 106 St/111 Ave.
- » Eleven bungalows from 106 Street.
- » Former Arby's restaurant at 106 St/Princess Elizabeth Ave.

As construction progresses, the backfilled lots that are visible at the former building sites will become part of the North LRT right-of-way.

Tree relocations and removals for the North LRT are nearly complete. Occasional spot tree removals may be required as construction progresses.

See schedule details on Page 3.

Construction Schedule - Summer 2011

Please see the following **approximate** schedule of construction preparations and their affected roadways, listed southeast to northwest.

Summer 2011 Approximate Construction Schedule			
Road/Intersection	Impact/Closure	Work	Approx. Dates
103A Ave 99 St to 100 St	Temporary partial closure. East/West traffic reduced to one lane each.	Sewer relocation	Start: Apr/11 End: July/11
104 Street 102 Ave to 103 Ave	Temporary closure of southbound lane. Northbound traffic only.	Power utility relocation	Start: Jan/11 End: Aug/11
104 Street 103 Ave to 104 Ave	Temporary total closure of north portion. Closed to thru traffic.	Power utility relocation	Start: Jan/11 End: Aug/11
105 Avenue 101 St to 103 St	Temporary partial/total closures.	Power utility relocation Tunneling preparation	Start: July/11 End: 2013
105 Avenue 103 St to 105 St	Permanent total closure.	MacEwan LRT Station	Start: July/11 End: Permanent
103 Street 105 Ave to 108 Ave	Temporary partial closures. Single lanes north/south.	Drainage tunnel construction	Start: Oct/10 End: Oct/11
103 Street 107 Ave to 108 Ave	Temporary total closure of north section.	Drainage tunnel construction	Start: Apr/11 End: Oct/11
104 Street 105 Ave to 106 Ave	Temporary total closure. Closed to thru traffic.	Power utility relocation Phone utility relocation	Start: Sept/10 End: July/11
105 Street 110 Ave Intersection	Partial closure.	Power utility relocation Roadworks	Start: May/11 End: July/11
104 Street 108 Ave to Kingsway	Permanent total closure of north section.	Power utility relocation NLRT right-of-way	Permanently Closed
105 Street 110 Ave to Kingsway	Temporary total closure.	Relocate Kingsway traffic lanes	Start: May/11 End: Oct/11
Royal Alex west parking lot	Permanent partial closure.	Power utility relocation Future transit centre	Start: Mar/11 End: July/11
Kingsway 102 St to 106 St	Temporary total closure.	Relocate Kingsway	Start: May/11 End: Oct/11
106 Street 111 Ave to Princess Elizabeth Ave	Periodic temporary partial closures. Single lanes north/south.	Roadworks	Start: June/11 End: Oct/11
NAIT SW Corner	Parking restrictions.	Water utility relocation	Start: Late June/11 End: Aug/11



North LRT Goes Green

The City's goal is to recycle as much material as possible from buildings, roads and trees removed from the North LRT right-of-way.

The City donates logs and branches from removed trees to grade school landscape projects and artworks. Remaining wood is chipped for use in tree wells throughout Edmonton, or mulched and composted. Asphalt milled from Kingsway and concrete from demolished buildings will be used as surfaces for construction lay-down areas, or donated to the City's aggregate recycling program for use on other infrastructure projects.

Bricks from the former trolley substation on 105 Ave will be used for architectural flourishes around MacEwan LRT Station.

To learn more about Edmonton's various recycling programs, visit www.edmonton.ca/recycling

Three Month Construction Highlights

Month	July	August	September
Construction Activity	<ul style="list-style-type: none"> » MacEwan Station construction begins. » 105 Ave excavation begins. » 106 Street roadwork begins. 	<ul style="list-style-type: none"> » Trackwork begins. » Alleyway roadworks around 105 Street begin. » Kingsway LRT Station construction begins. 	<ul style="list-style-type: none"> » Kingsway roadwork continues. » All utility relocations complete. » Tunnel portal construction continues.

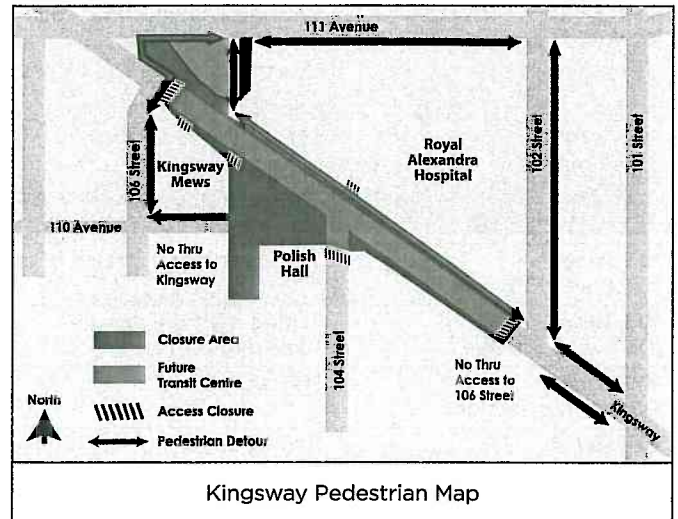
Frequently Asked Questions

Where can pedestrians cross while Kingsway is closed?

Pedestrians can cross Kingsway at 102 Street, 106 Street and 111 Ave. Pedestrians are not allowed to cross through the fenced construction zone between 102 Street and 106 Street. It is unsafe and illegal to do so. The City's goal is to complete the Kingsway roadwork safely. Signage is in place to help guide pedestrians.

Will pedestrians have access along 105 Ave during construction?

Pedestrian access on 105 Ave will be maintained whenever possible. However, at times pedestrians will be detoured to 104 Ave. Regular bulletins will notify the public whenever pedestrian access to 105 Ave is restricted. The safety of everyone remains the North LRT project's top priority.



Why does it take so long to drive out of the Royal Alex parking area?

Closing Kingsway between 102 Street and 106 Street increased traffic on 111 Ave and 101 Street. City engineers re-signalized all the adjacent intersections to maximize traffic flow in all directions. Nevertheless, increased delays at Royal Alex intersections are unavoidable. However, these delays are temporary. The City continues to monitor and mitigate their impact as much as possible.

Find out more about LRT Projects

This newsletter is available online. So is the animation video that explains the North LRT route. In addition to quarterly newsletters, LRT Projects posts monthly updates and construction bulletins online and sends digital copies to email distribution lists. If you wish to be added to the distribution lists please send an email to lrtprojects@edmonton.ca with "North LRT to NAIT" in the subject line.

We welcome your comments and questions about Edmonton's LRT Projects, their newsletters and their web pages.

Please check the LRT Projects web pages for updates. For further information or to comment, please contact:

LRT Projects Information Line:
780.496.4874

LRT Projects Email:
lrtprojects@edmonton.ca

LRT Projects Website:
www.edmonton.ca/lrtprojects

